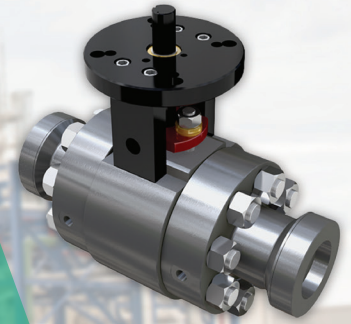


EQUIPMENT & SERVICES

NEW: Remington Severe Service Ball Valves

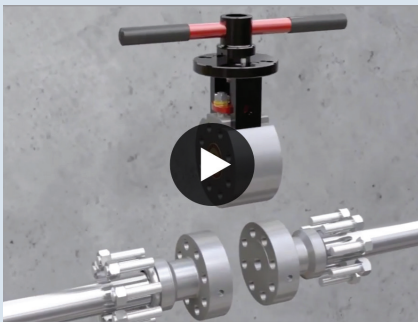
In-Line Repairability Saves Time and Money
Where Welded Connections Are Required



A Game Changer in the Power Industry

R-Series valves require minimal spreading of the valve joint (1/8 inch) to remove the center section for maintenance. The end connections remain welded in-line, which saves customers time and money by eliminating cutting of the installation welds and further Post Weld Heat Treating. There are no special tools needed to remove the R-Series from service. Actuation can stay attached to the center section, eliminating the need to reset stops or reconnect electrical/pneumatic connections.

Key Features



The R-Series features a removable body and easily accessible trim set that can be customized with different end connection materials to match piping needs. Remington has solved the joint leak problem with a proprietary gasket design. The TF gasket uses technological advances to provide sealing in the most difficult applications.

[WATCH VIDEO](#)

As an Emerson Impact Partner, we have numerous actuator selections and can either deliver your product ready for installation at your site or have a trained Emerson field technician do the installation for you. Your ball valve can be manually operated or set up with an electric or pneumatic actuator with a 4-20mA signal to meet your application.

R-Series Applications:

- ◆ High temperature
- ◆ High pressure
- ◆ Hot reheat spray
- ◆ Main turbine drain
- ◆ Soot blower header
- ◆ Super-heater spray
- ◆ Main steam supply
- ◆ Boiler feed pump
- ◆ Boiler drains
- ◆ Feed water drains
- ◆ Above and below seat drains
- ◆ Attemperator spray block